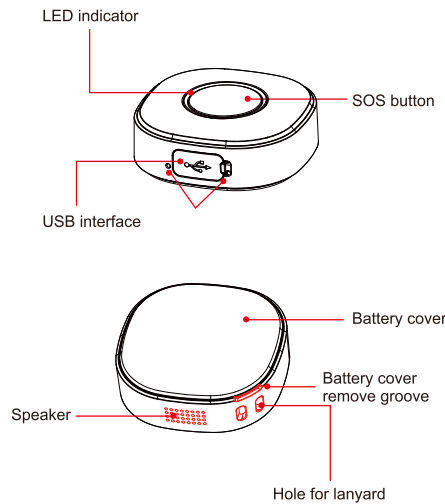






1. Overview

1.1 Device Overview



1.2 Accessories

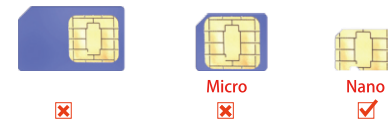
Charger	USB cable	User Guide	Lanyard
 x1	 x1		

1.3 Specifications

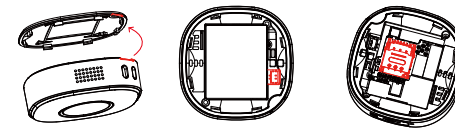
Operating Temperature	-20°C ~ +60°C
Battery	500mAh/3.8V lithium-polymer battery
Standby	3-4 days
Dimension	45.0 *45.0*16.0mm
Weight	33g

2. Getting Started

2.1 SIM Card



2.2 SIM Card Installation



- 1 Open the battery cover
- 2 Remove the battery connector
- 3 Insert the SIM card as shown in the picture

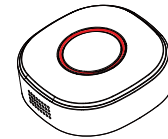
Put on the battery, battery connector and cover when SIM card inserted.

Note: Please make sure the SIM card has access to Caller ID service. 30MB data plan per month is recommended in normal use.

3. Power on/off

3.1 Power on

Long press SOS for 3 seconds to turn on the device. Blue/Red/Green LED indicators will be on.



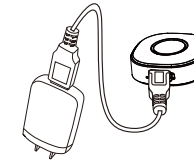
3.2 Power off

No SIM card: Press SOS for 3 seconds.
With SIM card: Remove the battery.

For power on failure, please ensure the battery is inserted correctly and then charge it.

3.3 Battery Charging

Connect the device with the original charger, 1) device is charging if red indicator is always on;
2) Red indicator flickers slowly if device fully charged.



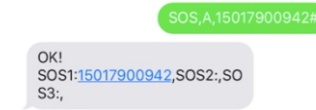
Note: It takes about 2 hours to fully charge the battery. It is normal that the device goes hot during charging.

4. Main Functions

4.1 SOS

4.1.1 Set SOS Number

Send SMS command to the terminal: `SOS,A,mobile phone1,mobile phone2,mobile phone3#`



Note: Maximum you can set 3 SOS numbers. This process can also be done through the APP or web platform (check 5.1)

4.1.2 Delete SOS Numbers

Send SMS command: `SOS, D, mobile phone1,mobile phone2,mobile phone3#`

4.1.3 Check Current SOS Number

Command: `SOS#`
Respond example: `SOS1: 12352***, SOS2: 132532***, SOS3:135323***`

In emergent case, press SOS for 3s to activate SOS alarm. Then the device will send SOS SMS to preset SOS numbers and then dial the numbers in 3 circles until the call is picked up. Alarm message will also be sent to platform.

Short press the button to answer an incoming call while long press to hang up. Short press to hang up when in a call state.

Note: 15 phone numbers can be added to the white list by APP and platform. Only phone number in the white list have access to a call.

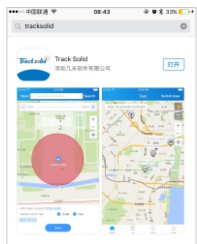
4.2 Voice Monitoring

Send "JT" to the device by the phone with SOS number, the device will reply "OK" and call the SOS number. After the call connected, voice monitoring function will be activated and the SOS number can hear the sound around the device.

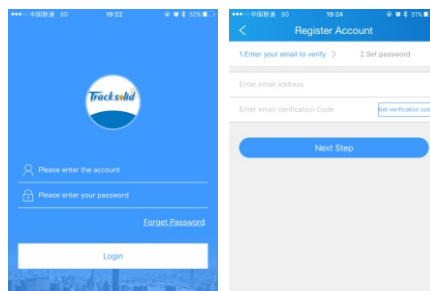
In case of no network or APP can't be used, please send "DW" to the device with SOS number and the device will reply general location by SMS. If GPS successfully positioned within 2 minutes, the device will send accurate Location.

5. Mobile APP

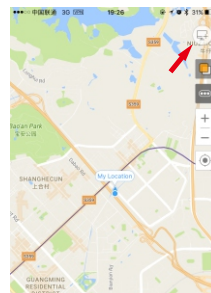
By APP and platform, you can check location, set SOS number, etc. Search "Tracksolid" on APP Store or Google Play, download and install.



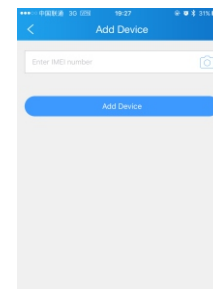
Click "Register Account" down below to create your account. Enter your email address to finish the process.



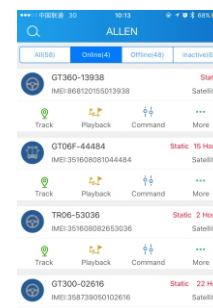
Click the upper right icon to add your device:



Input the device IMEI number



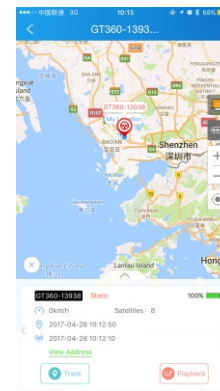
If the device GPRS network is working properly, you should see your device online in the list.



WiFi, LBS & GPS Positioning

Qbit by default use WiFi positioning, known as indoor positioning, as to save power consumption and increase standby time. It automatically scans nearby WIFI access points' SSID and MAC address and sends back to our central database, then our server returns the address to the APP. If WiFi is not available, then device will use LBS positioning alternatively.

For accurate GPS positioning, send SMS command: `GPSON#` to the terminal, device will activate GPS for 5 minutes. Note: GPS activated might shorten the device standby time significantly.



6. Caution & Notice

- 1.SOS number should be preset if you are willing to receive alert message.
- 2.If put indoors or covered, the device may be unable to locate, please take it to open field.
- 3.Use of the device in the fire or water is strongly prohibited.
- 4.Do Not bend or disassemble the battery and the device.
- 5.Please use the original battery. The warranty will be invalid by using any other accessory. The manufacturer will not take any responsibility for any damage caused by not using the original battery.
- 6.For any questions, please contact the customer service.

Warranty Instructions and Service

- 1.The warranty is valid only when the warranty card is properly completed, and upon presentation of the proof of purchase consisting of original invoice indicating the date of purchase, model and serial No.of the product. We reserve the right to refuse warranty if this information has been removed or changed after the original purchase of the product from the dealer.
- 2.Our obligations are limited to repair of the defect or replacement the defective part or at its discretion replacement of the product itself.
- 3.Warranty repairs must be carried out by our Authorized Service

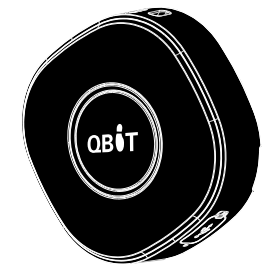
Centre. Warranty cover will be void, even if a repair has been attempted by any unauthorized service centre.
4.Repair or replacement under the terms of this warranty does not provide right to extension or renewal of the warranty period.
5.The warranty is not applicable to cases other than defects in material, design and workmanship.

Maintenance Record

Date	Serviced by
Product Model	
IMEI Number	
Fault Descriptions	
Comments	

Qbit Mini GPS Tracker

Quick Start Guide (Version 1.0)



Read carefully before use.
Product appearance, color and accessories may change without prior notice.